

Voice of the Ancient Bard in A minor

© Copyright 2011. All Rights Reserved. Tiger Woods in Therapy: A Psycho-Analysis by Ukulele.

Written by William Blake.

Arranged for Ukulele gCEA by Gary Jugert

#25

♩ = 120

Score for the first system (measures 1-4):

- Voice:** Treble clef, 4/4 time. Four measures of whole rests.
- Ukulele:** Treble clef, 4/4 time. Four measures of whole rests. Tuning: T (Treble), A (Middle), B (Bass).
- Bass:** Bass clef, 4/4 time. Measures 1-2: whole rests. Measure 3: quarter note G2, quarter note F2. Measure 4: quarter note E2, quarter note D2, quarter note C2, quarter note B1.
- Drum Set:** Snare drum, 4/4 time. Measures 1-2: quarter note, eighth note, eighth note, quarter note, eighth note, eighth note, quarter note. Measures 3-4: quarter note, eighth note, eighth note, quarter note, eighth note, eighth note, quarter note.

Score for the second system (measures 5-8):

- Voice:** Treble clef, 4/4 time. Four measures of whole rests.
- Ukulele:** Treble clef, 4/4 time. Four measures of whole rests.
- Bass:** Bass clef, 4/4 time. Measure 5: quarter note G2, quarter note F2. Measure 6: quarter note E2, quarter note D2, quarter note C2, quarter note B1. Measure 7: quarter note G2, quarter note F2, quarter note E2, quarter note D2. Measure 8: quarter note C2, quarter note B1, quarter note A1, quarter note G1.
- Drum Set:** Snare drum, 4/4 time. Measures 5-8: quarter note, eighth note, eighth note, quarter note, eighth note, eighth note, quarter note.

Voice of the Ancient Bard in A minor

A m6



A m6



A m6



D m



D m



10



Youth of de-light come hi-ther and see the o - pen-ing morn.

10



10



10



E7



E7



A m6



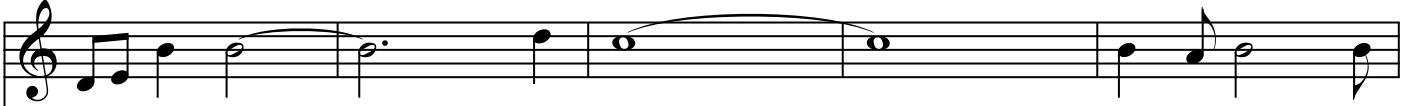
A m6



E m



15



I - mage Truth new born. Doubt is fled and

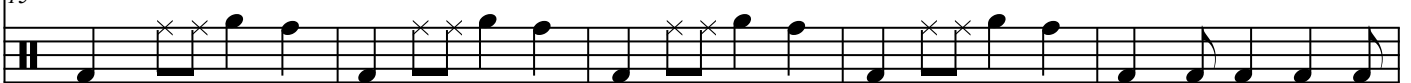
15



15



15



Voice of the Ancient Bard in A minor

E m



B



B



D m



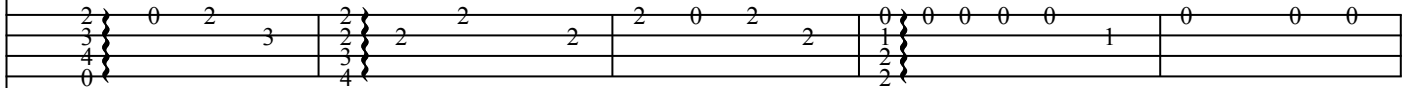
D m



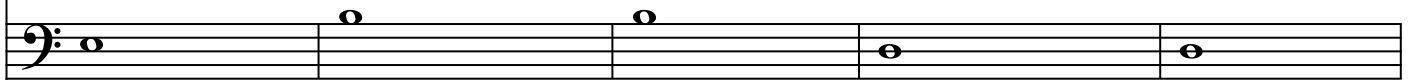
20



20 clouds of rea - son, dark di - sputes and art - ful teas - ing. Fol - ly is an end - less maze. Tang - led



20



20



E7



E7



A m7



A m6



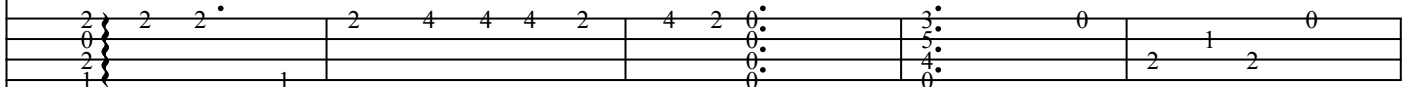
D m



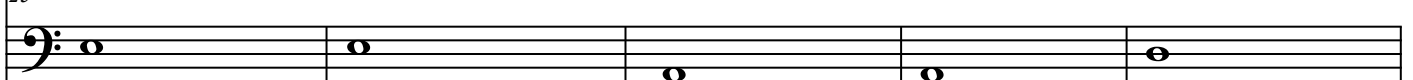
25



25 roots per - plex her ways. How ma - ny have fall - en there? _____ Theystum - ble all night



25



25



Voice of the Ancient Bard in A minor

D m



A m6



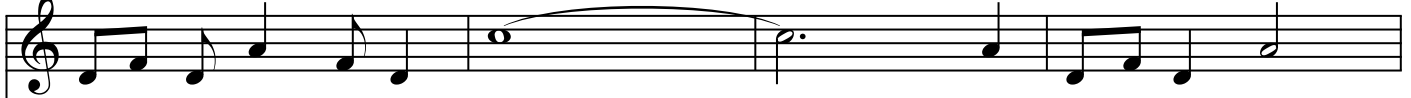
A m6



D m

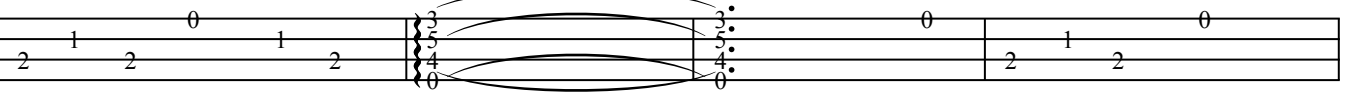


30

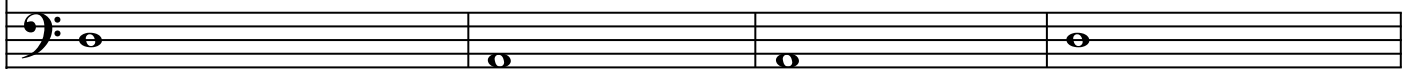


o - ver the bones of the dead. They stum-ble all night

30



30



30



D m



A m6



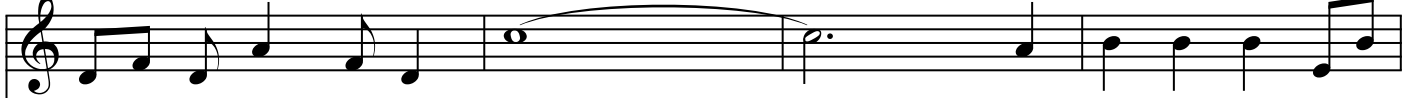
A m6



E7

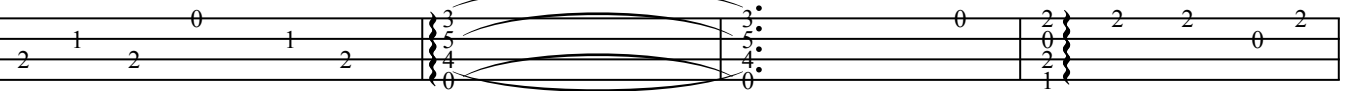


34

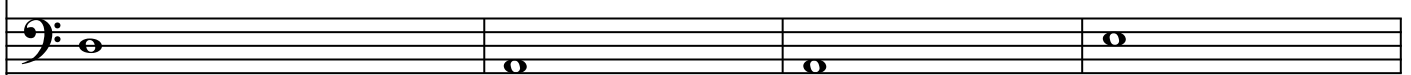


o - ver the bones of the dead, and wish to lead the o -

34



34



34



Voice of the Ancient Bard in A minor

E7 A m7 A m6 A m6

38

38 thers when they should be led. _____ Youth of de - light come

2 4 4 4 2 0 3 4 5 5 3 3

0 5 4 0

0 4 0 0

38

38

A m6 D m D m E7 E7

42

42 hi - ther and see the o - pen - ing morn. I - mage Truth _____ new

5 3 3 2 2 1 1 0 5 2 0 2 2 2 2 5

2 2 1 0 2 0 2 2 2 2

42

42

Voice of the Ancient Bard in A minor

A m6



E m



E m



B



B



47

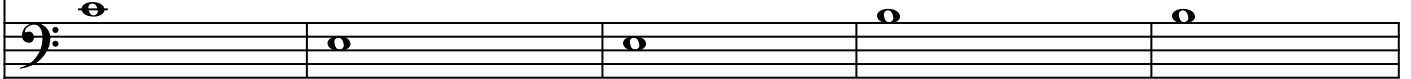


born. Doubt is fled and clouds of rea - dark di-sputes and art - ful teas-ing.

47



47



47



D m



D m



E7



E7



A m7

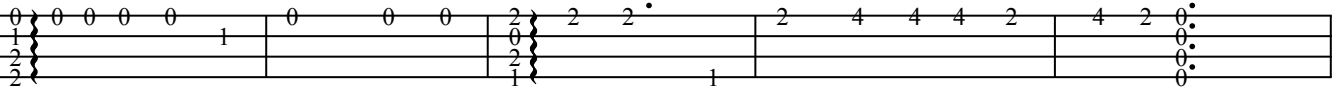


52

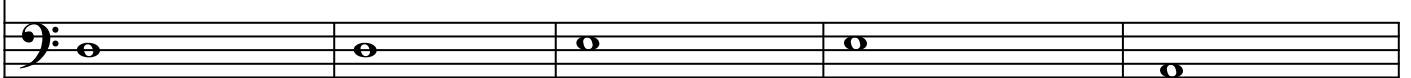


Fol-ly is an end-less maze. Tang-led roots per-plex her ways. How ma-ny have fall-en there? _____

52



52



52



Voice of the Ancient Bard in A minor

57

A m6 A m6 A m6 D m D m

57 — Youth of de-light come hi-ther and see the o - pen-ing morn.

3 5 4 0 | 4 5 5 3 3 | 5 3 | 3 | 2 2 1 1 0 5

57

57

E7 E7 A m6

62 I - mage Truth _____ new born. _____

62

2 0 2 | 2 0 2 | 5 | 3 5 4 0

62

62